

# NEWPORT BRASS

## TUB & SHOWER

DRAIN BODY

# 278P-02

### Features

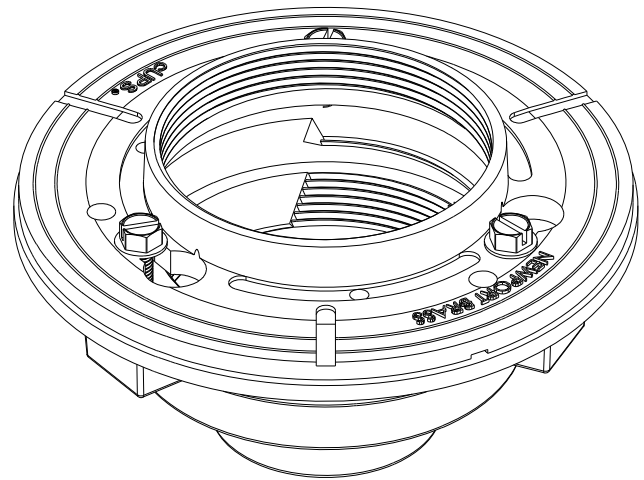
- PVC construction
- Not suitable for hot mop applications
- 4" IPS Inlet
- 2" Solvent Weld Outlet
- Intended for use with 6" Square Shower Drain Throat Newport Brass Model 277-02



### Codes / Standards Compliance

Meets or exceeds the following at date of manufacture:

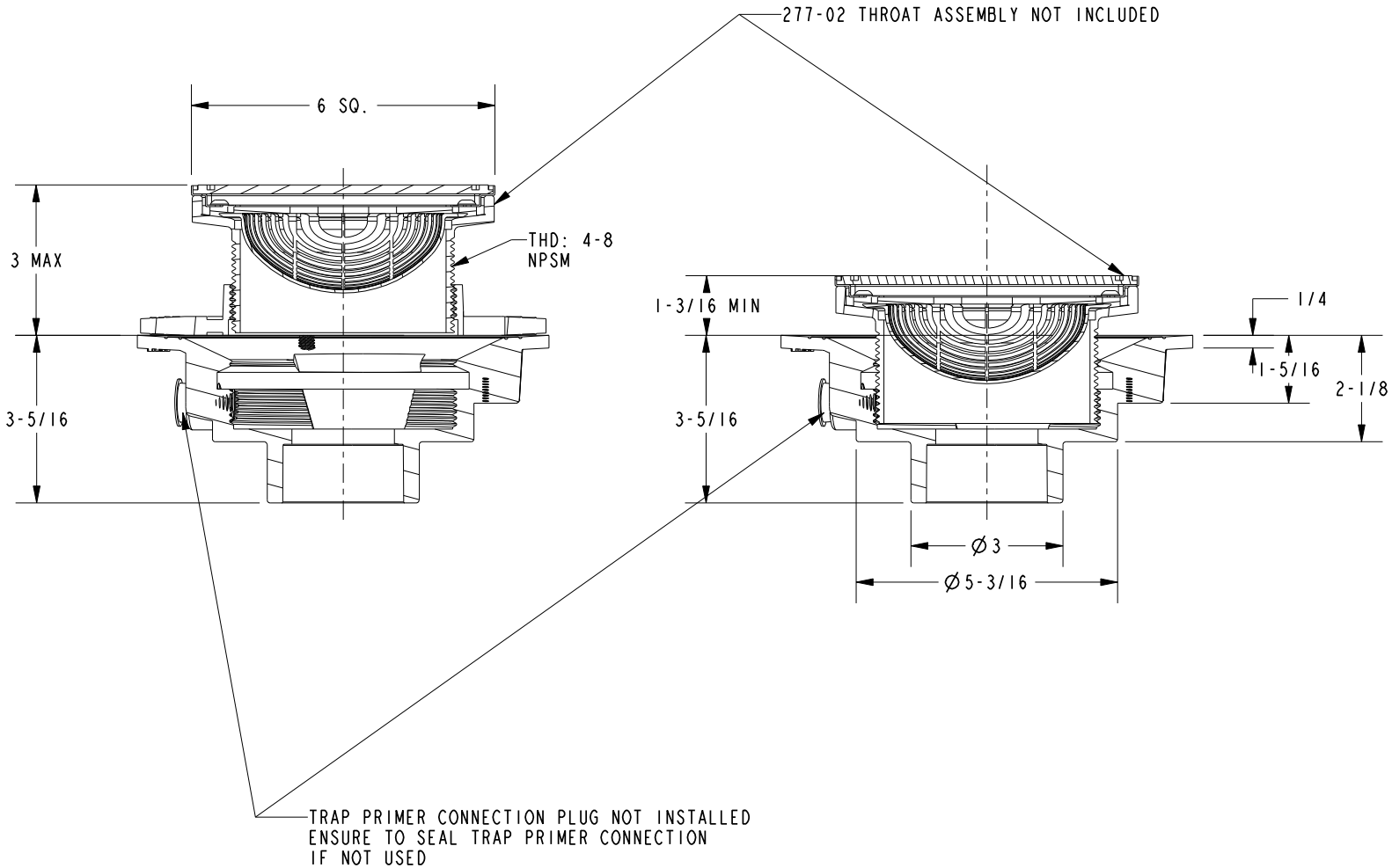
- ASME A112.18.2/CSA B125.2
- IAPMO/cUPC
- IPC
- All applicable US Federal and State material regulations



# NEWPORT BRASS

## PRODUCT DIMENSIONS *(Units are in inches)*

Product Dimensions are provided for reference only. For specific product installation guidelines, please reference the Installation Instructions of the product being installed.



**DRAIN BODY**  
**278P-02**