

ALEXANDRIA

Features

ROMAN TUB WITH HANDSHOWER DECK TRIM

Solid brass construction
4.89" (12.4 cm) spout height at outlet
9.44" (24.4 cm) spout reach (c-c)
Diverter valve and hoses as needed for handshower
ADA Compliant (Handles Only)
1.8 GPM (6.8 LPM) Max, Handshower Only
Intended for use with Newport Brass rough valve kit (Accessory Required) which incorporates the following:
- Brass valve bodies and quick-connect spout fitting
- Quarter-turn washerless ceramic disc 3/4" valve cartridges

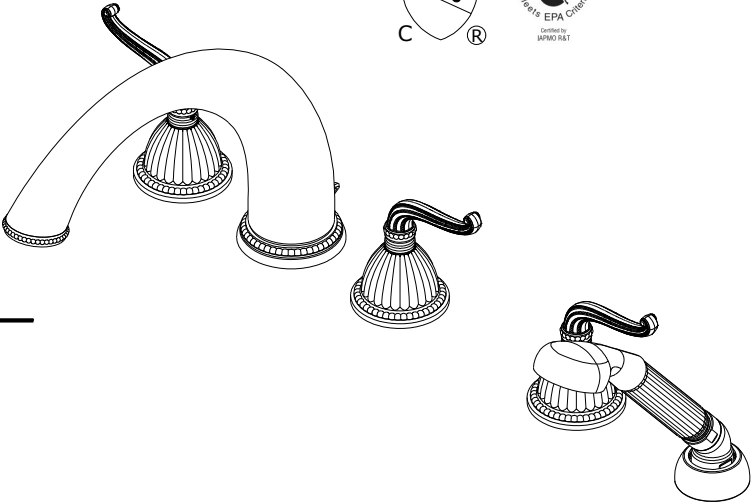
3-1097



Codes / Standards Compliance

Meets or exceeds the following at date of manufacture:

ASME A112.18.1/CSA B125.1-18
IAPMO/cUPC
IPC
ADA & ICC/ANSI A117.1 (Handle Only)
Energy Policy Act of 1992
EPA WaterSense
California Energy Commission
ASME A112.18.3 (BACK FLOW)
All applicable US Federal and State material regulations

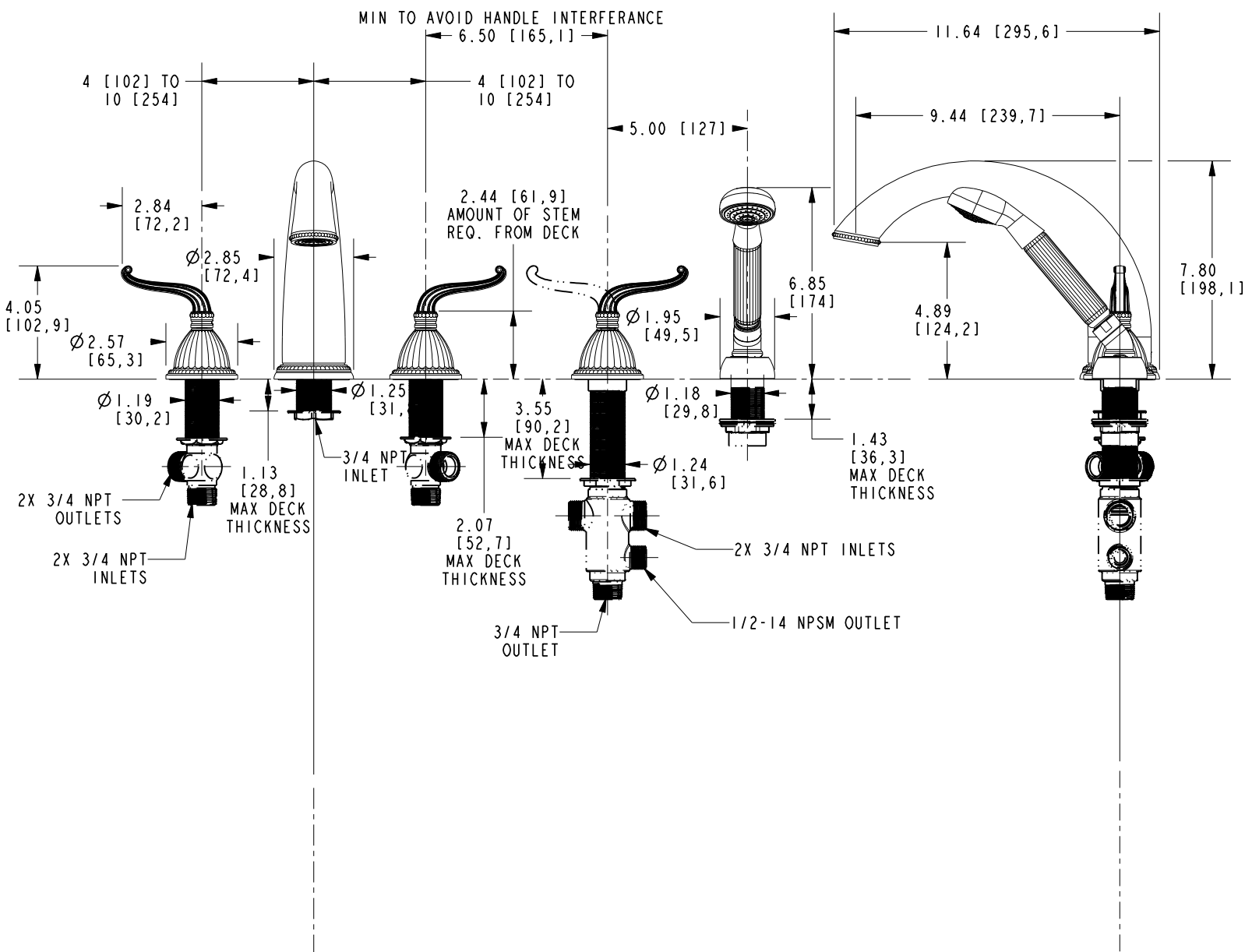


ACCESSORY REQUIRED	
System Element	Deck Tub Valve
Description	3-Valve Assembly With Quick Connect Spout Adapter
Inlet/Outlet Size	3/4" / 3/4"
Part Number	1-507
Image	A line drawing of the accessory components. It includes two small, cylindrical valve cartridges, a larger valve body with a quick-connect fitting, and a short section of pipe with a 90-degree elbow.

3-1097

PRODUCT DIMENSIONS (Units are in inches)

Product Dimensions are provided for reference only. For specific product installation guidelines, please reference the Installation Instructions of the product being installed.



ROMAN TUB WITH HANDSHOWER DECK TRIM

3-1097

Page 2 of 2

EN-4697

REV H

NEWPORT BRASS
Flawless Beauty. From Faucet to Finish.

t: 949.417.5207 | www.newportbrass.com
©2025 NewportBrass