

Features

- All metal construction
- ADA compliant contemporary lever handles
- 6-5/16" (16.0 cm) spout height at outlet
- 7" (17.8 cm) spout reach (c-c)
- 1.8 gallons (6.7 liters) per minute handshower maximum flow rate
- Intended for use with Newport Brass rough valve kit (Included Accessory) which incorporates the following:
 - Brass valve bodies and quick-connect spout fitting
 - Quarter-turn washerless ceramic disc 3/4" valve cartridges
 - Diverter valve and hoses as needed for handshower

Roman Tub with Handshower Deck Trim

3-8207



Codes / Standards Compliance

Meets or exceeds the following at date of manufacture:

- ASME A112.18.1/CSA B125.1
- IAPMO/cUPC
- IPC
- ADA
- ICC/ANSI A117.1
- All applicable US Federal and State material regulations
- Other: This product is NOT Watersense certified

Colors / Finishes

- 15: Polished Nickel
- 15S: Satin Nickel - PVD
- 26: Polished Chrome

Specified Model

Model	Description	Colors Finishes
3-8207	Roman Tub with Handshower Deck Trim	<input type="checkbox"/> 15 <input type="checkbox"/> 15S <input type="checkbox"/> 26

Required Accessory

Model	Description	Colors Finishes
1-661	3/4" valve kit. Includes quick connect.	<input type="checkbox"/> NA

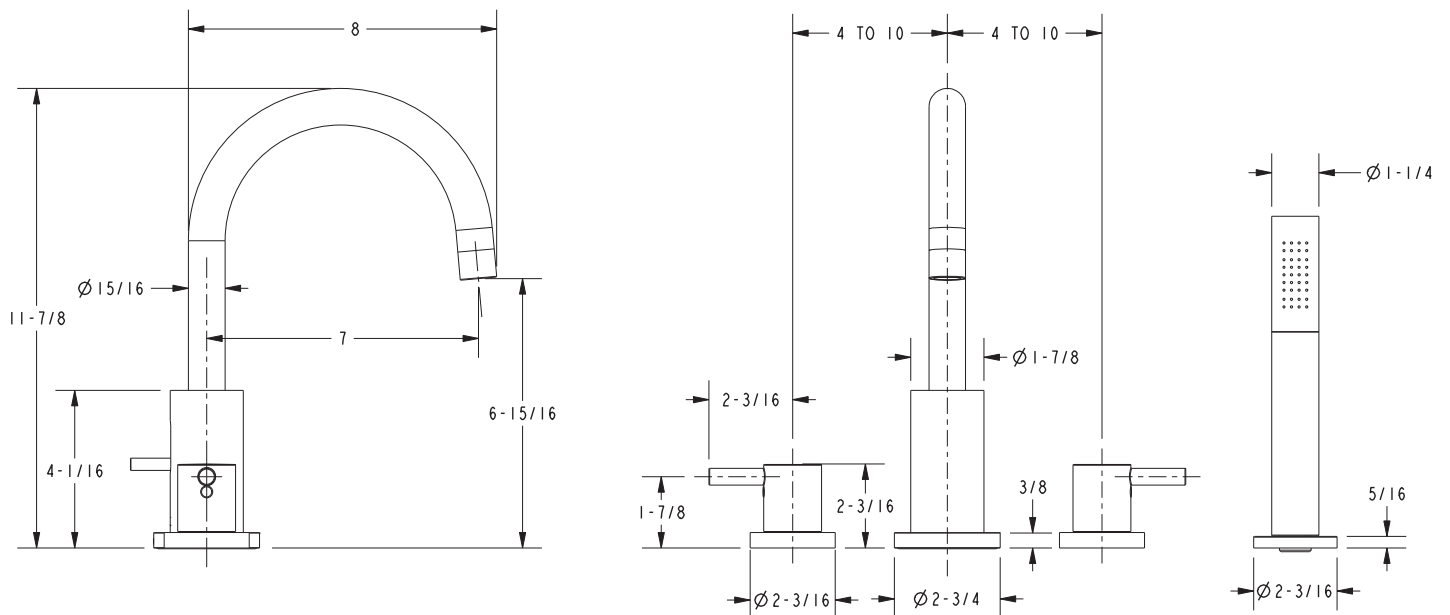
Product Specification

Add "Length Indicator and Color / Finish" suffix to Model number, below.

The Roman Tub with Handshower Deck Trim shall be made of metal construction. Roman Tub with Handshower Deck Trim shall incorporate ADA compliant contemporary lever handles. Product shall incorporate a 6-5/16" (16.0 cm) spout height at outlet and a 7" (17.8 cm) spout reach (c-c). Rough valve kit shall incorporate brass valve bodies with quarter-turn washerless ceramic disc 3/4" valve cartridges, a quick-connect spout fitting and a diverter valve with hoses as needed for handshower. Roman Tub with Handshower Deck Trim shall be Newport Brass Model 3-8207/_____ and Newport Brass rough valve kit shall be 1-661.

3-8207

PRODUCT DIMENSIONS *(Units are in inches)*



Newport 365 Bronwen Roman Tub with Handshower
3-8207