

# NEWPORT BRASS

## NEWPORT BRASS

LAVATORY DRAIN

# 326



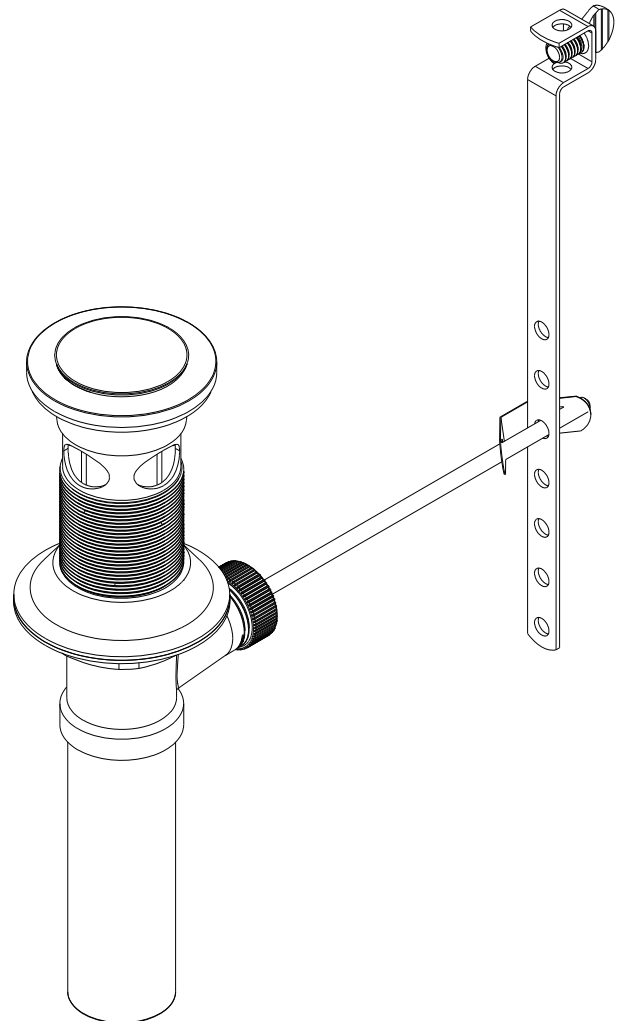
### Features

- Solid brass construction
- Pop-Up Style Drain
- Drain & Tailpiece fully finished
- Compatible with standard 1-5/8 to 1-3/4 inch sink drain hole
- Includes Overflow Holes
- Includes 1-1/4" O.D. Tailpiece

### Codes / Standards Compliance

Meets or exceeds the following at date of manufacture:

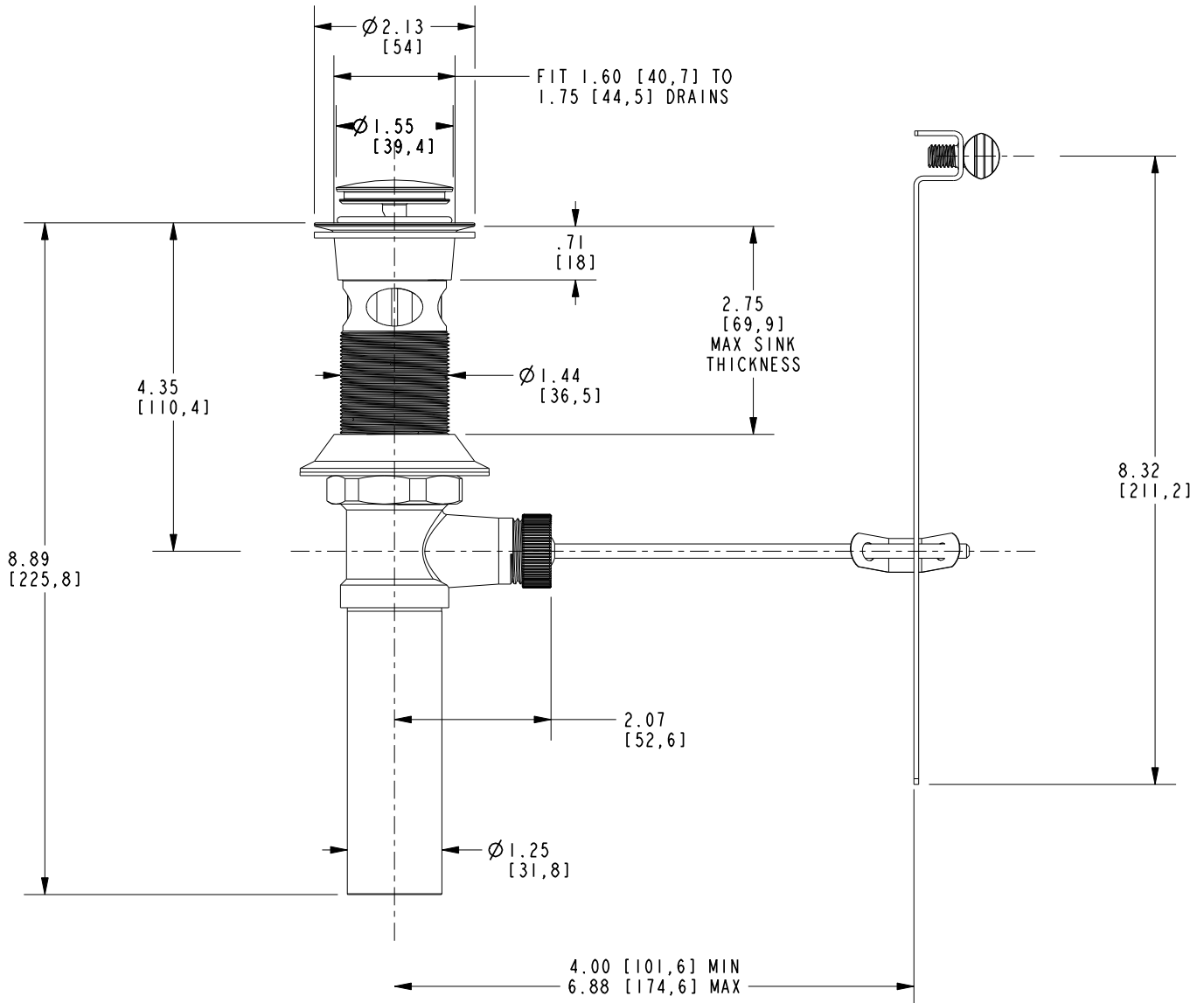
- ASME A112.18.1/CSA B125.2
- IAPMO/cUPC
- IPC
- All applicable US Federal and State material regulations



# NEWPORT BRASS

## PRODUCT DIMENSIONS *(Units are in inches)*

Product Dimensions are provided for reference only. For specific product installation guidelines, please reference the Installation Instructions of the product being installed.



LAVATORY DRAIN

326