

Toilet Tissue Holder
81-27

Features

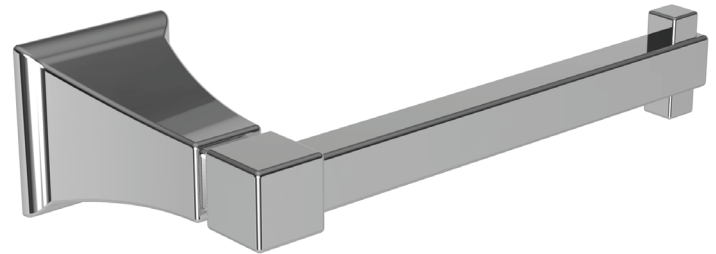
- Solid metal construction
- Single-post, open roller design
- Complements Newport 365 Rydder product series



Codes / Standards Compliance

Meets or exceeds the following at date of manufacture:

- All applicable US Federal and State material regulations



Colors / Finishes

- 09: Old World Bronze
- 15: Polished Nickel
- 15S: Satin Nickel - PVD
- 26: Polished Chrome

Specified Model

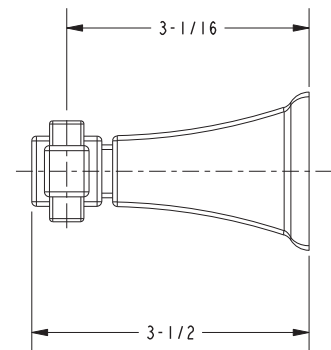
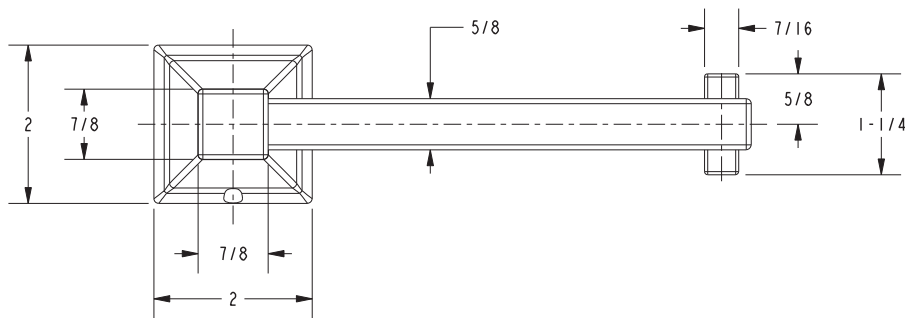
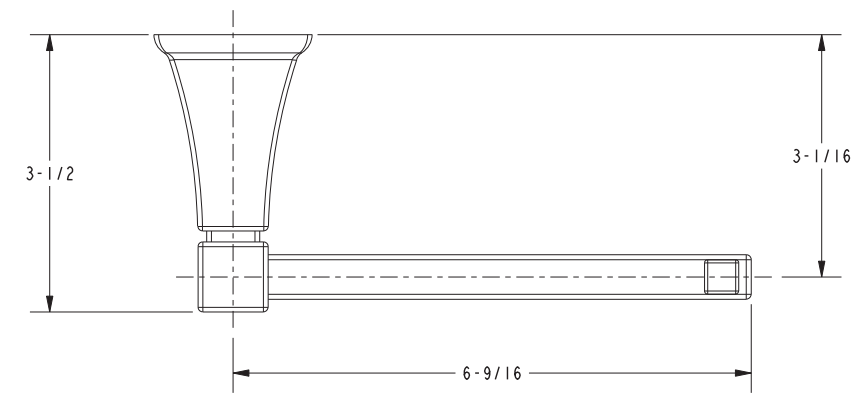
Model	Description	Colors Finishes
81-27	Toilet Tissue Holder	<input type="checkbox"/> 09 <input type="checkbox"/> 15 <input type="checkbox"/> 15S <input type="checkbox"/> 26

Product Specification Add "Length Indicator and Color / Finish" suffix to Model number, below.

The Toilet Tissue Holder shall be made of solid metal construction and incorporate a single-post, open roller design. Toilet Tissue Holder shall complement Newport 365 Rydder product series. Toilet Tissue Holder shall be Newport 365 Model 81-27/_____.

81-27

PRODUCT DIMENSIONS *(Units are in inches)*



Newport 365 Toilet Tissue Holder 81-27