

**Toilet Tissue Holder**  
**890-1500**

**Features**

- Solid brass construction
- Double-post design with spring-loaded, non-separating roller
- Complements Astor, Alveston, Bevelle, Chesterfield, Fairfield and Seaport product series

**Codes / Standards Compliance**

Meets or exceeds the following at date of manufacture:

- All applicable US Federal and State material regulations



**Colors / Finishes**

- 10B: Oil Rubbed Bronze
- 15: Polished Nickel
- 15S: Satin Nickel - PVD
- 26: Polished Chrome
- Other: Refer to the Newport Brass catalog for additional color/finish options.

**Specified Model**

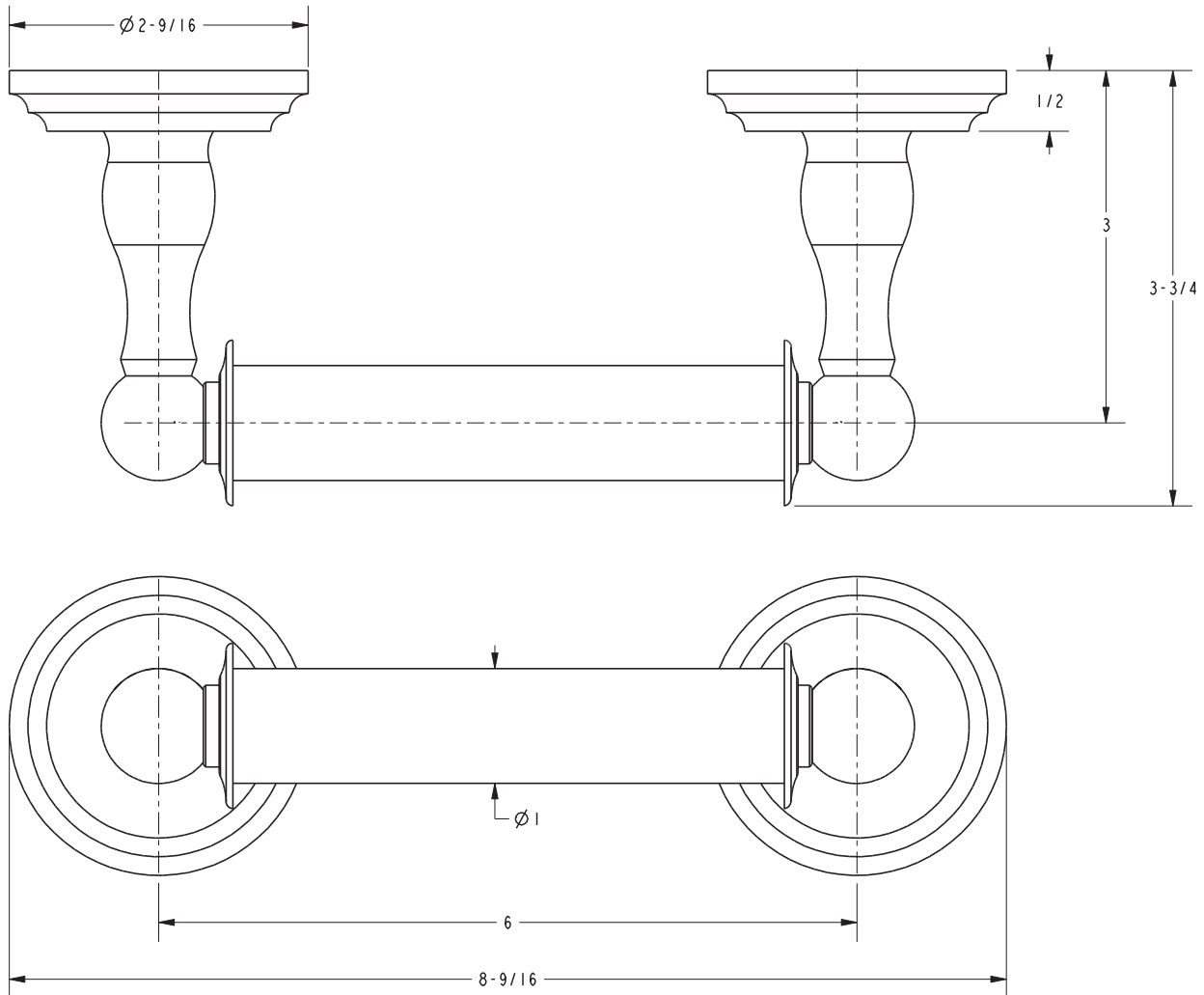
Model	Description	Colors   Finishes				
890-1500	Toilet Tissue Holder	<input type="checkbox"/> 10B	<input type="checkbox"/> 15	<input type="checkbox"/> 15S	<input type="checkbox"/> 26	<input type="checkbox"/> Other

**Product Specification** Add "Color / Finish" suffix to Model number, below.

The Toilet Tissue Holder shall be made of solid brass construction and incorporate a double-post design utilizing a non-separating, spring-loaded roller. Toilet Tissue Holder shall complement Newport Brass Astor product series. Toilet Tissue Holder shall be Newport Brass Model 890-1500/\_\_\_\_\_.

# 890-1500

## PRODUCT DIMENSIONS *(Units are in inches)*



### Astor Toilet Tissue Holder 890-1500