

CHESTERFIELD

Tub and Handshower Set

930-4261



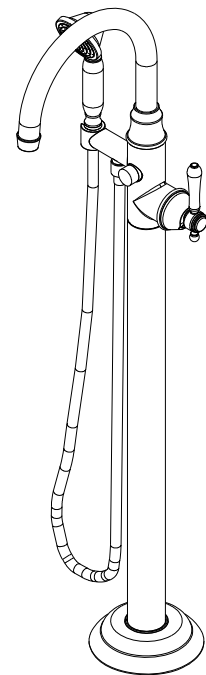
Features

- Brass Construction
- Euro-motion ceramic disc 40 mm valve cartridge
- 9.25 gallons (35 liters) per minute spout maximum flow rate
- 3/4" braided hot and cold supply lines (with 1/2" adapters)
- 35.95" (91.3 cm) tub spout height at outlet
- 8.72" (22.1 cm) tub spout reach (center-center)
- Traditional handshower design of brass construction
- Floor mounting bracket with integral base and escutcheon
- ADA Compliant (Handles Only)
- 1.8 GPM (6.8 LPM) Max, Handshower Only

Codes / Standards Compliance

Meets or exceeds the following at date of manufacture:

- ASME A112.18.1/CSA B125.1
- IAPMO/cUPC
- IPC
- ADA & ICC/ANSI A117.1 (Handle Only)
- Energy Policy Act of 1992
- EPA WaterSense
- California Energy Commission
- ASME A112.18.3 (Back Flow)
- All applicable US Federal and State material regulations



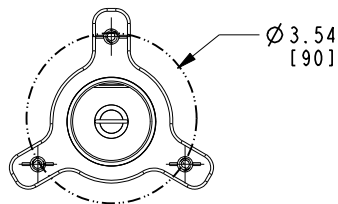
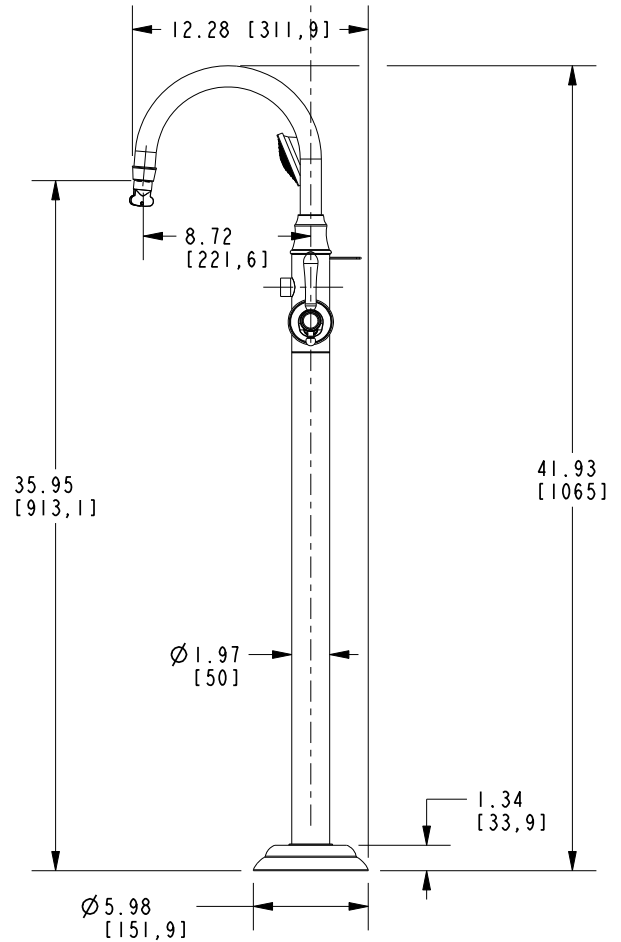
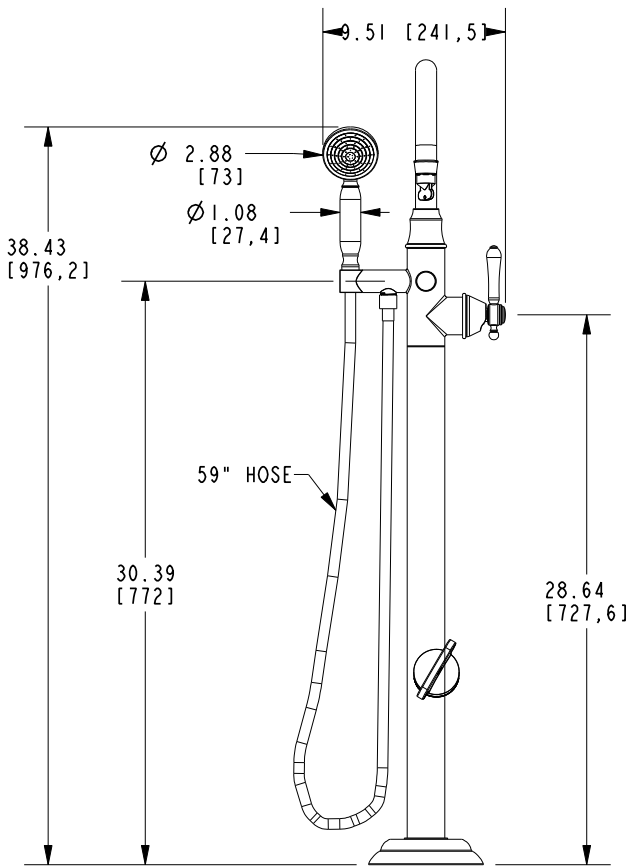
ACCESSORY OPTIONAL

System Element	1-339
Description	Freestanding Tub Fill Rough Kit (Floor Mount)
Image	

930-4261

PRODUCT DIMENSIONS (Units are in inches)

Product Dimensions are provided for reference only. For specific product installation guidelines, please reference the Installation Instructions of the product being installed.



Tub and Handshower Set

930-4261

Page 2 of 2
EN- 5008
REV E

NEWPORT BRASS
Flawless Beauty. From Faucet to Finish.

t: 949.417.5207 | www.newportbrass.com
©2025 NewportBrass