

CHESTERFIELD

Features

BAR FAUCET

938

Solid brass construction
Forged brass body with integral rotating spout and handles
Quarter-turn washerless ceramic disc valve cartridges
Rotating spout assembly with integral supply hoses
For single hole configurations
5.23" (13,3 cm) spout height at outlet
6.95" (17,7 cm) spout reach (c-c)
ADA compliant traditional cross handles
ADA Compliant
1.8 GPM (6,8 LPM) Max



Codes / Standards Compliance

Meets or exceeds the following at date of manufacture:

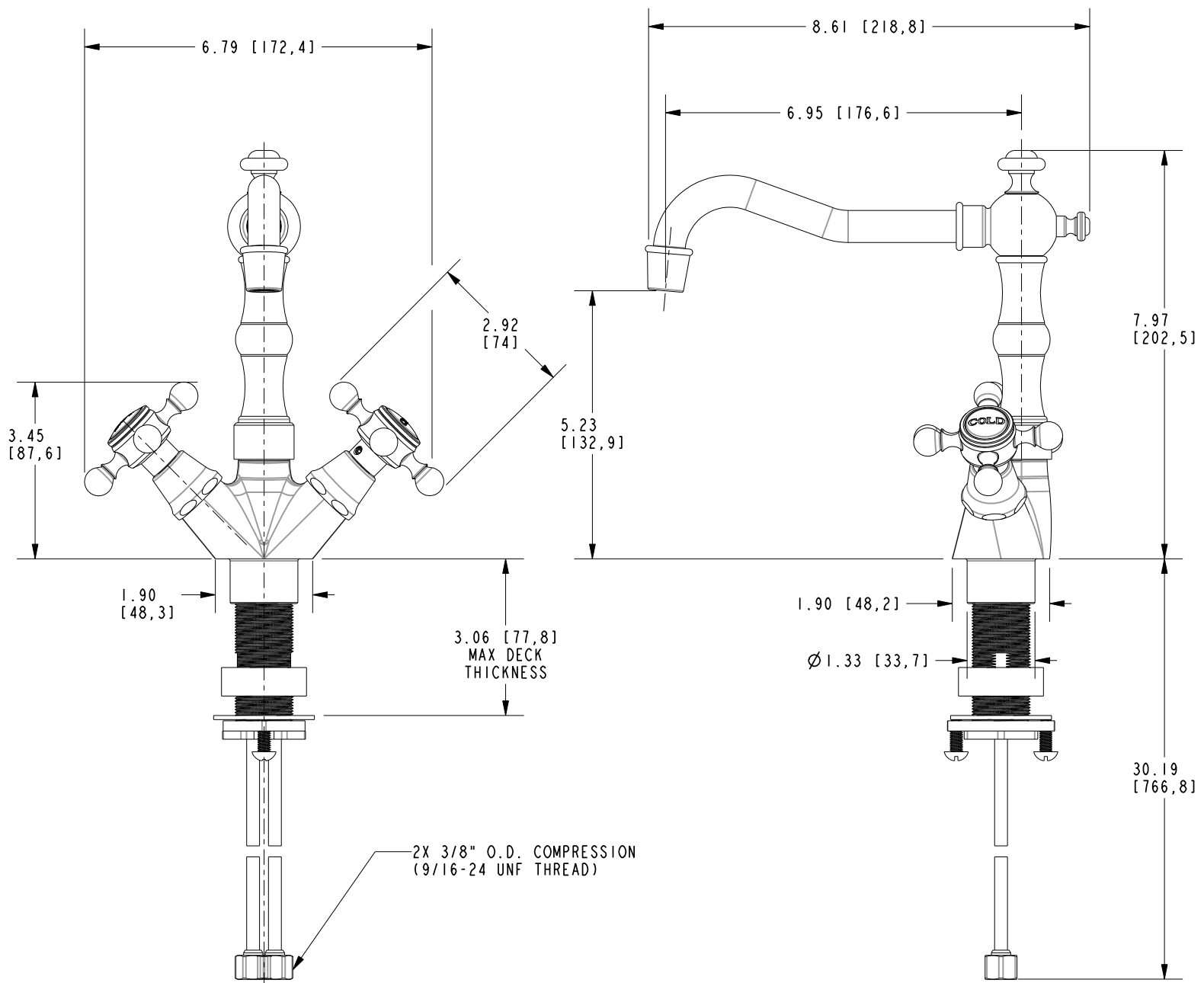
ASME A112.18.1/CSA B125.1
IAPMO/cUPC
NSF/ANSI/CAN 61, SECTION 9
NSF/ANSI 372
IPC
ADA & ICC/ANSI A117.1
Energy Policy Act of 1992
California Energy Commission
All applicable US Federal and State material regulations



938

PRODUCT DIMENSIONS *(Units are in inches)*

Product Dimensions are provided for reference only. For specific product installation guidelines, please reference the Installation Instructions of the product being installed.



BAR FAUCET

938

Page 2 of 2
EN- 4975
REV H

NEWPORT BRASS.
Flawless Beauty. From Faucet to Finish.

t: 949.417.5207 | www.newportbrass.com
©2024 Brasstech, Inc.