

NEWPORT BRASS

CHESTERFIELD

BRIDGE STYLE KITCHEN FAUCET

9463

Features

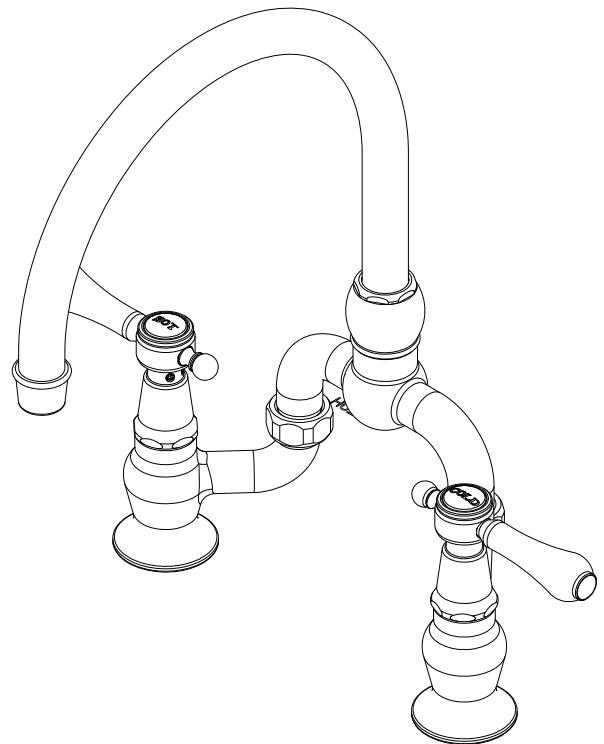
- Solid brass construction
- Bridge-style brass valve bodies
- Quarter-turn washerless ceramic disc valve cartridges
- Swivel Spout assembly
- 8.89" (22.6 cm) spout height at outlet
- 7.32" (18.6 cm) min. to 9.20" (23.4 cm) max. spout reach (c-c)
- For 8.00" (20.3 cm) centers
- 1.8 gallons (6.8 liters) per minute maximum flow rate
- ADA Compliant
- 1.8 GPM (6.8 LPM) Max



Codes / Standards Compliance

Meets or exceeds the following at date of manufacture:

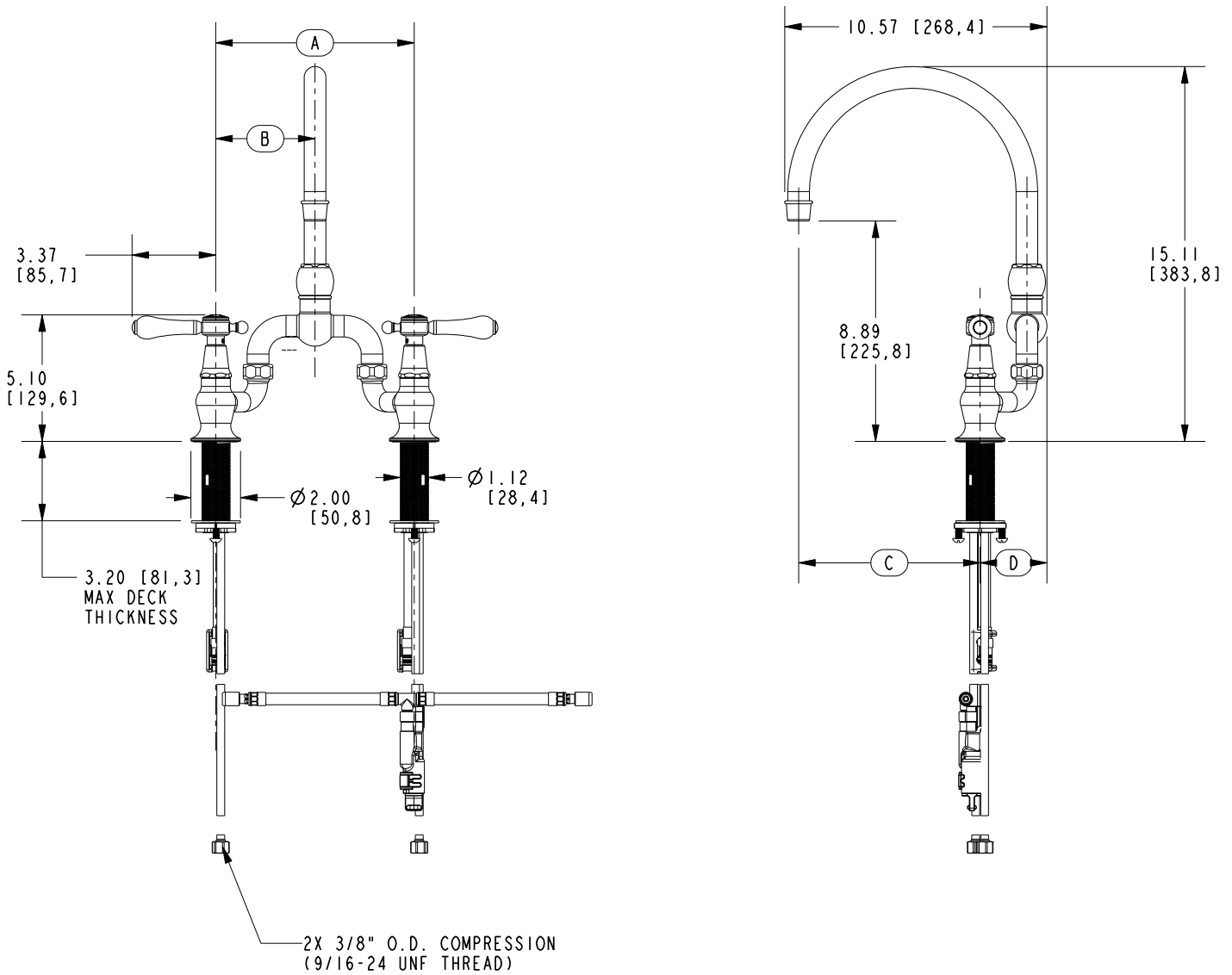
- ASME A112.18.1/CSA B125.1
- IAPMO/cUPC
- NSF/ANSI 61, SECTION 9
- NSF/ANSI 372
- IPC
- ADA & ICC/ANSI A117.1
- Energy Policy Act of 1992
- California Energy Commission
- All applicable US Federal and State material regulations



NEWPORT BRASS

PRODUCT DIMENSIONS *(Units are in inches)*

Product Dimensions are provided for reference only. For specific product installation guidelines, please reference the Installation Instructions of the product being installed.



VARIABLE FAUCET SETUP			
A	B	C	D
8	4	8-1/2	2-13/16
9-11/16	4-13/16	10-3/8	15/16

BRIDGE STYLE KITCHEN FAUCET

9463